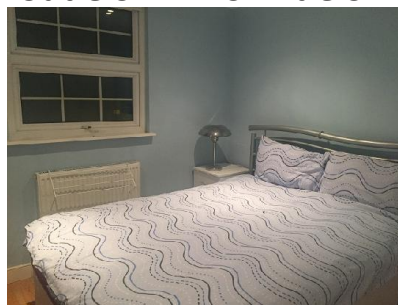


Self-Catering Private Home Accommodation Information



<p>Name and Address of Host Family</p> <p>Ms X</p> <p>Address: SW16</p> <p>Bed and breakfast= £135/week Self-Catering =£125</p> <p>£45 Accommodation Booking fee</p> <p>Bed and Breakfast is with use of the kitchen to cook small meals. Included in the price is the use of washing machine x1 per week. Bed linen and towels are supplied by the host and changed weekly.</p>	<p>Travel Zone 3</p> <p>Travel to Victoria School:</p> <p>Streatham Common Rail station is only a short walk away. The train takes 20 minutes to Victoria Station and comes every 10 minutes at peak times. You can walk to Victoria school from the station in 10 minutes.</p> <p>Get a weekly travel card which entitles you to travel on the local trains, bus and underground within zones 1-3</p> <p>Zone 1 and Zones 1- 2 travel cards are £33.00 for a 7-day travel card and £126.80 for a monthly travel card. Zone 1 -3 travel cards are £38.70 for a 7-day travel card and £148.70 for a monthly travel card.</p>
---	--

Family: X is a retired Mathematics Teacher. Ms X has hosted many students and enjoys learning about their culture and meeting new people. She lives with her daughter, Y, who was born in 1993 and is working as a Lawyer.

Home: There are 2 rooms for students use and a bathroom just for the students use.

X and the students eat together at mealtimes. X is flexible with her kitchen and students can use it, if they decide to have self-catering

Area: Streatham is a suburb of London

Internet: Yes

Smokers: No Smokers

Please note that a deposit must be paid in advance to confirm your accommodation.

A minimum payment of 2 weeks (1 week if only booking 1 week) accommodation must be received at least 2 weeks before arrival to secure the accommodation and the rest must be paid on arrival.

If you wish to cancel accommodation, then at least 2 weeks' notice must be given. Any cancellations of less than 2 weeks will be charged 2 weeks' rent (1 week if only booking 1 week). If you wish to change your accommodation or shorten your stay once you have arrived then you need to give 7 days' notice.

To look at the approximate location please use this link:

<https://www.google.co.uk/maps/place/Westcote+Rd,+London+SW16+6BN/@51.4234701,-0.1425599,17z/data=!3m1!4b1!4m5!3m4!1s0x4876067d86c08c1f:0x544f92659d78bd40!8m2!3d51.4234534!4d-0.1407943>

More details will be available on individual hosts on enquiry.