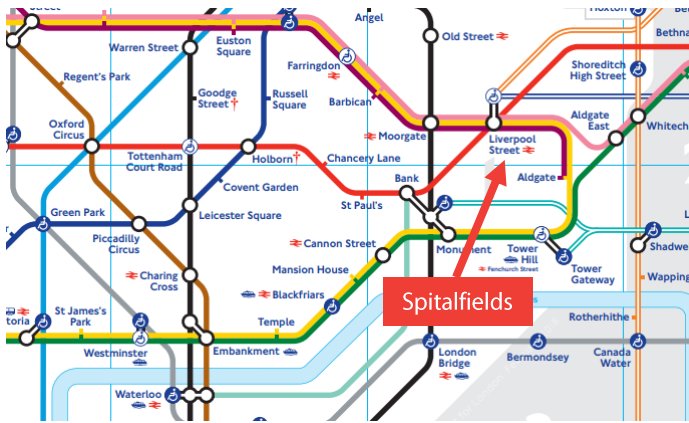


Chapter Spitalfields

Zone 1 Apartments (2-Bedroom)
 Available All Year Round 2018-2019

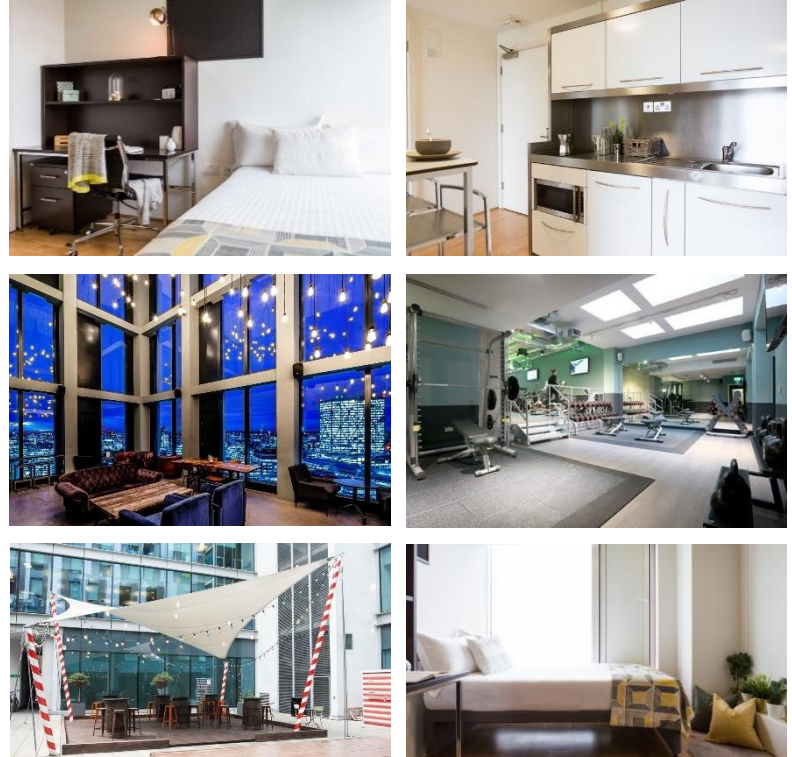
Location

This exceptional hall of residence is in a fantastic location, only 7 minutes walk from Liverpool Street Underground (Central, Circle, Metropolitan, Hammersmith & City lines), Overground and National Rail station and less than 15 minutes travelling distance to Oxford Circus in central London.



Features

- Free 200Mb Dual Band Wi-Fi internet ✓
- Fully equipped kitchens ✓
- Bedding & linens included ✓
- Bar & lounge on 32nd floor ✓
- On-site gym, dance studio & cinema ✓
- On-site card-payment laundry ✓
- Study, games & karaoke rooms ✓
- Viewing gallery & library on 33rd floor ✓
- 24 hour reception with CCTV & secure door entry ✓
- Post room service & secure bike storage ✓
- Utility bills included ✓



Description

One of the tallest student residences in the world, with spectacular views of the London skyline, Chapter Spitalfields features an on-site gym, various social rooms, bar/lounge area and communal study spaces.

The modern 2-bedroom apartments include single bedrooms, a fully equipped kitchen and shared bathroom. Bedding and linens are provided, but students are advised to bring their own towels. Students are responsible for cleaning their apartment and laundering their bed linen.

Terms & Conditions: Minimum stay 4 weeks. Stays must begin and end on Saturdays or Sundays. Refundable deposit of £250.00 will apply. Cancellation, postponement or curtailment of stay received less than 4 weeks prior to arrival will incur a cancellation charge of 4 weeks. No refund for curtailment of stay after arrival or no shows. Departures in October, November and December not accepted. Minimum age 18. Images are representative.

Ask about our other residences, homestays, apartment and house shares

Britannia Student Services meets the standards for registration with the British Council as a provider of homestay, residential, hostel and independent self-catering accommodation for adults and under-18s for accredited providers in London.

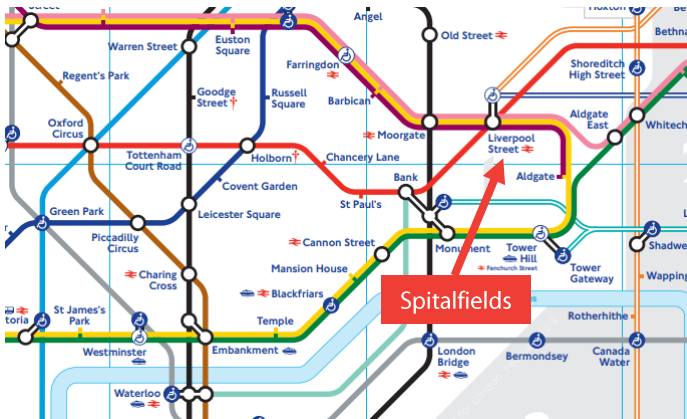


Chapter Spitalfields

Zone 1 Apartments (4-Bedroom)
Available All Year Round 2018-2019

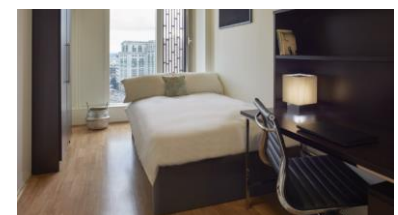
Location

This exceptional hall of residence is in a fantastic location, only 7 minutes walk from Liverpool Street Underground (Central, Circle, Metropolitan, Hammersmith & City lines), Overground and National Rail station and less than 15 minutes travelling distance to Oxford Circus in central London.



Features

- Spectacular views of London from each bedroom ✓
- Free 200Mb Dual Band Wi-Fi internet ✓
- Fully equipped kitchens & dining area ✓
- In-apartment lounge with TV ✓
- Bedding & linens included ✓
- Bar & lounge on 32nd floor ✓
- On-site gym, dance studio & cinema ✓
- On-site card-payment laundry ✓
- Study, games & karaoke rooms ✓
- Viewing gallery & library on 33rd floor ✓
- 24 hour reception with CCTV & secure door entry ✓
- Post room service & secure bike storage ✓
- Utility bills included ✓



Description

One of the tallest student residences in the world, with spectacular views of the London skyline from each of these upper floor bedrooms, Chapter Spitalfields features an on-site gym, communal social and study rooms, and bar/lounge area.

The single bedrooms in 4-bedroom apartments share a fully equipped kitchen, dining/lounge area and two bathrooms. Bedding and linens are provided, but students are advised to bring their own towels. Students are responsible for cleaning their apartment and laundering their bed linen.

Terms & Conditions: Minimum stay 4 weeks. Minimum age 18. Stays must begin and end on Saturday or Sunday. For bookings of 14 weeks or less, cancellations received less than 4 weeks before arrival will incur a charge of 4 weeks. Once confirmed, cancellation of bookings of 15 weeks or more, will incur a charge of 4 weeks. No refund for cancellations received less than 4 weeks prior to arrival. A refundable deposit of £250.00 per person applies. No refund for curtailment of stay after arrival or no show. Departures in October, November and December will not be accepted. Images are representative.



Ask about our other residences, homestays, apartment and house shares

Britannia Student Services meets the standards for registration with the British Council as a provider of homestay, residential, hostel and independent self-catering accommodation for adults and under-18s for accredited providers in London.